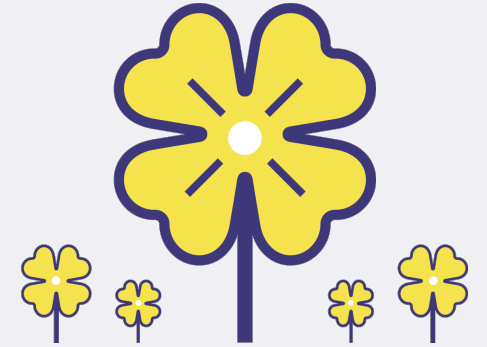
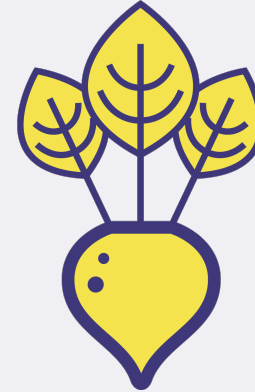




↑ Increased  
output  
↓ Decreased  
input



Have achieved a **30% increase** in spring barley output over the last 30 years.

**Increased output and decreased inputs** for winter rye relative to winter wheat.

Biofumigation using mustard and radish to **reduce free living nematodes/PCN.**

Intelligent use and understanding of cover crops; the **right crop providing the right solution.**